

**ELERO ECT**

**3D 360° Around View**

**Driving Assistance System**





# **CONTENT**

**About The Solution**

**System Specifications**

**Panoramic Image Synthesis Technology**

**AI Algorithm**

**Application**

# ABOUT THE SOLUTION

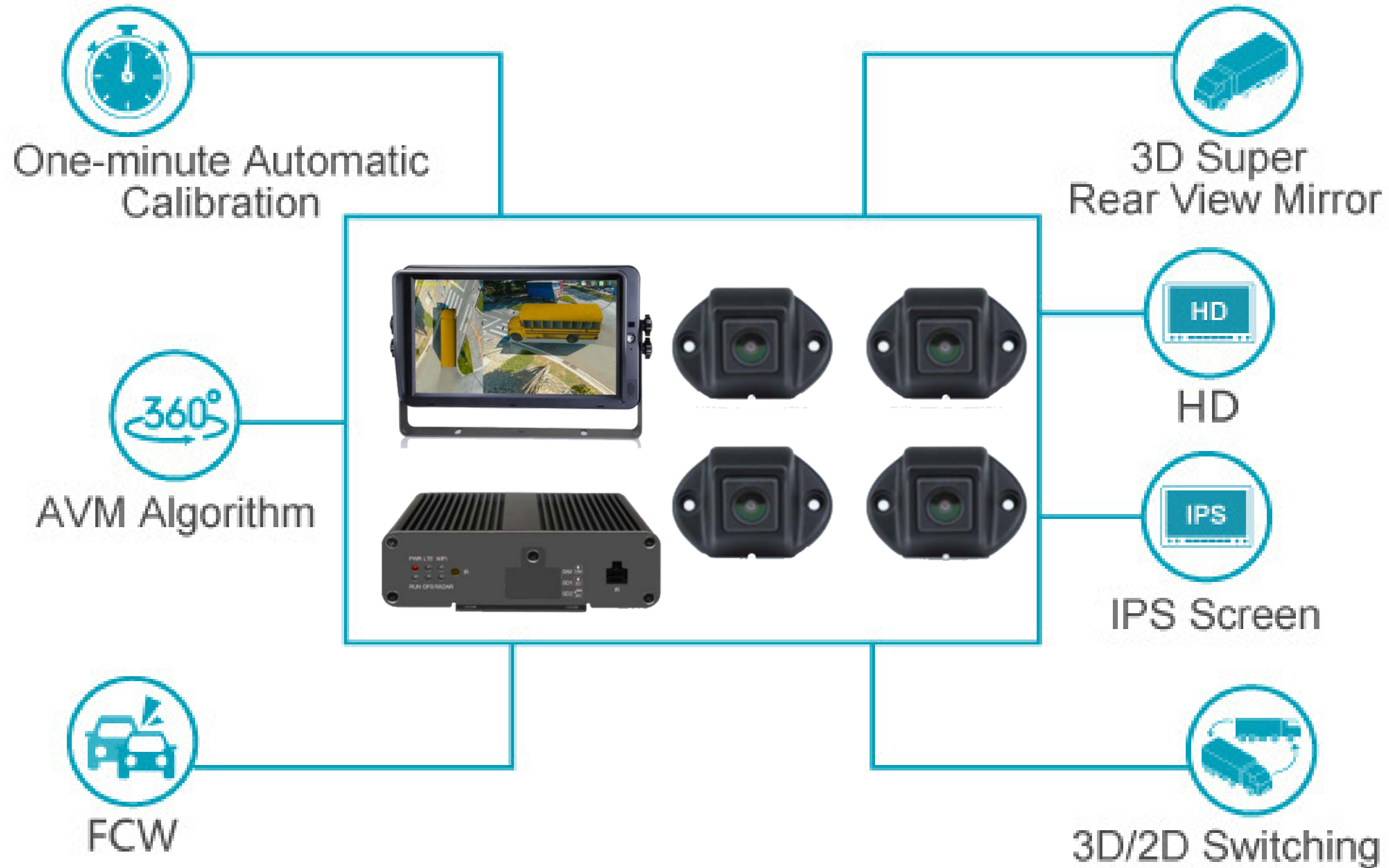
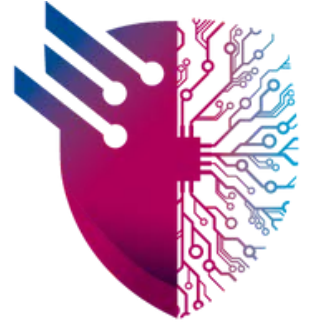


- **360° Around View Driving Assistance System provides a true 360° panoramic bird-view, monitoring with no blind spot to ensure driving safety.**
- **It adopts panoramic image synthesis technology, which can simulate a 3D real driving scene.**
- **It features easy installation and automatic calibration which is specially designed for transportation such as trucks, buses, and emergency vehicles.**





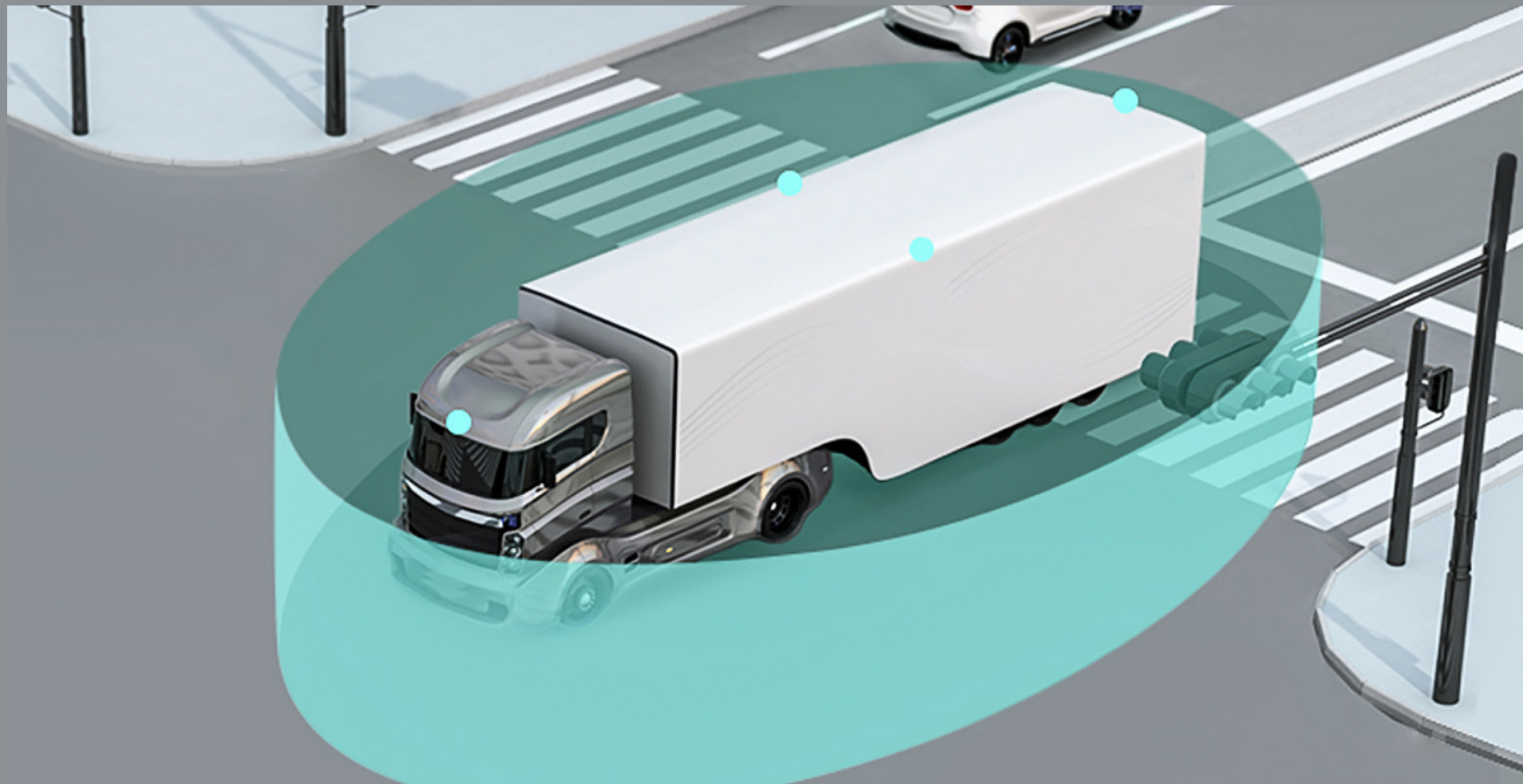
# SYSTEM SPECIFICATIONS



# 360° SEAMLESS STITCHING

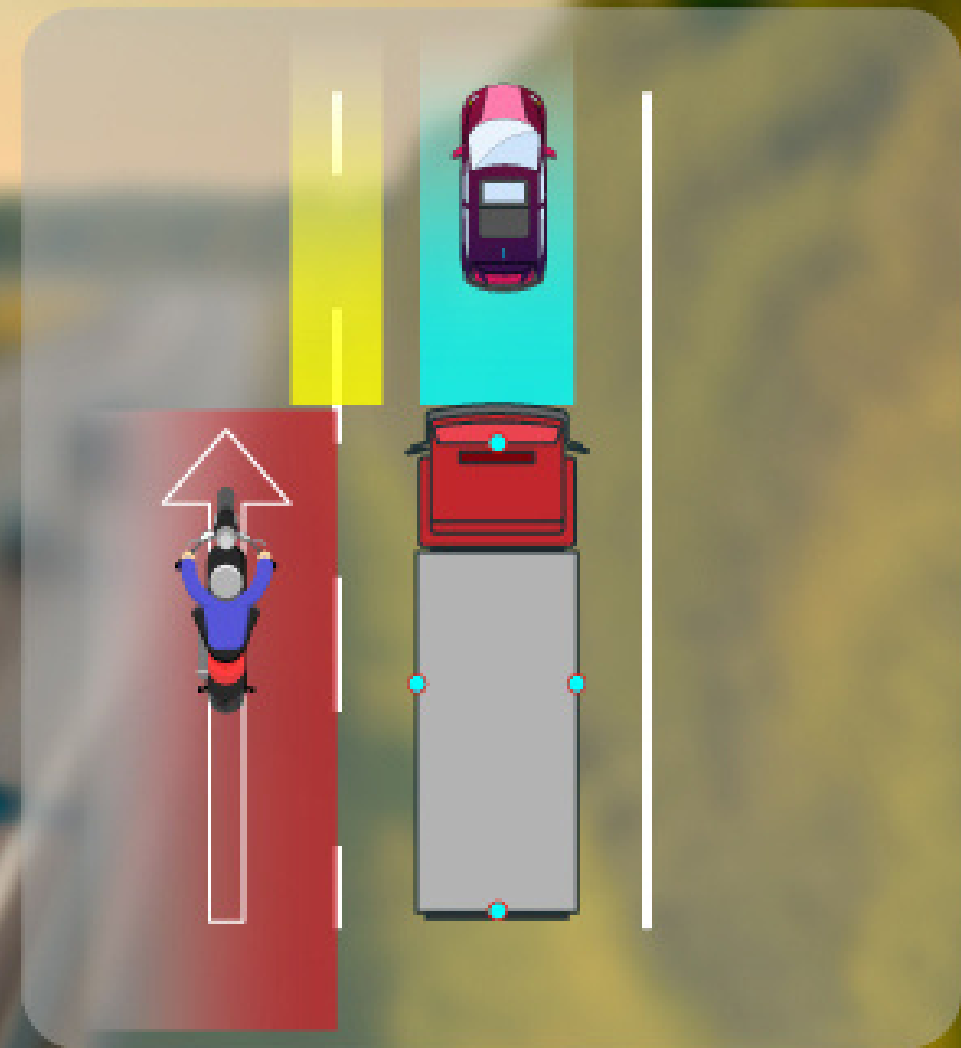


- Support 4CH/6CH/8CH inputs, 360° Around View Driving Assistance System can realize true 360° panoramic bird-view, monitoring with no blind spot to ensure driving safety.





# Built-in AI algorithm, integrating LDW+FCW+BSD full area detection



# APPLICATION



- Applied to various applications construction, mining, truck & bus to achieve safe operation



# Get In Touch

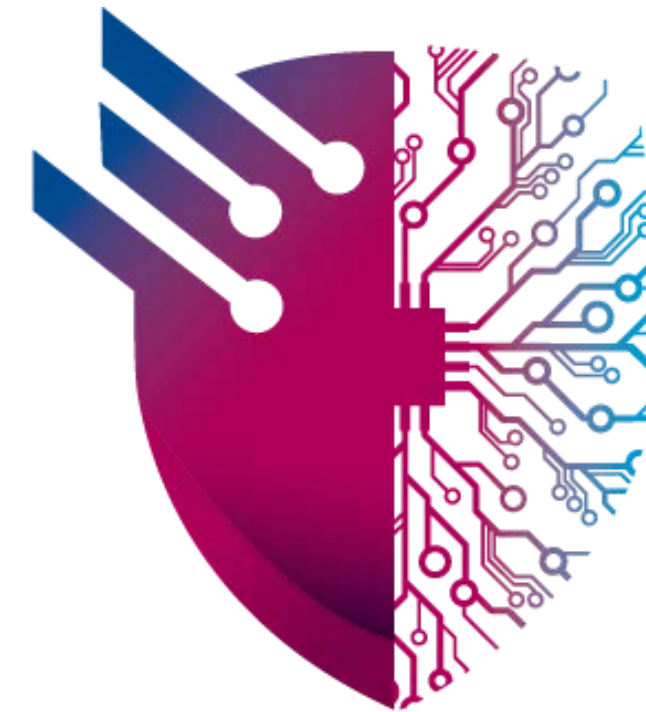
**We are here for you !**

 **+20 103 200 9855 / +20 107 097 7935**

 **<https://elero-ect.com/>**

 **Info@elero-ect.com**

 **417 Omar Ibn El-Khattab St.  
District 2, 6th October, Giza, Egypt.**



**ELERO**  
Engineering Consulting & Training