



# ELERO ECT MOBILE DVR SOLUTION







# CONTENT

- **Mobile DVR Solution**
- **Benefits and Features**
- **System Specifications**
- **Application**
- **Case Shows**



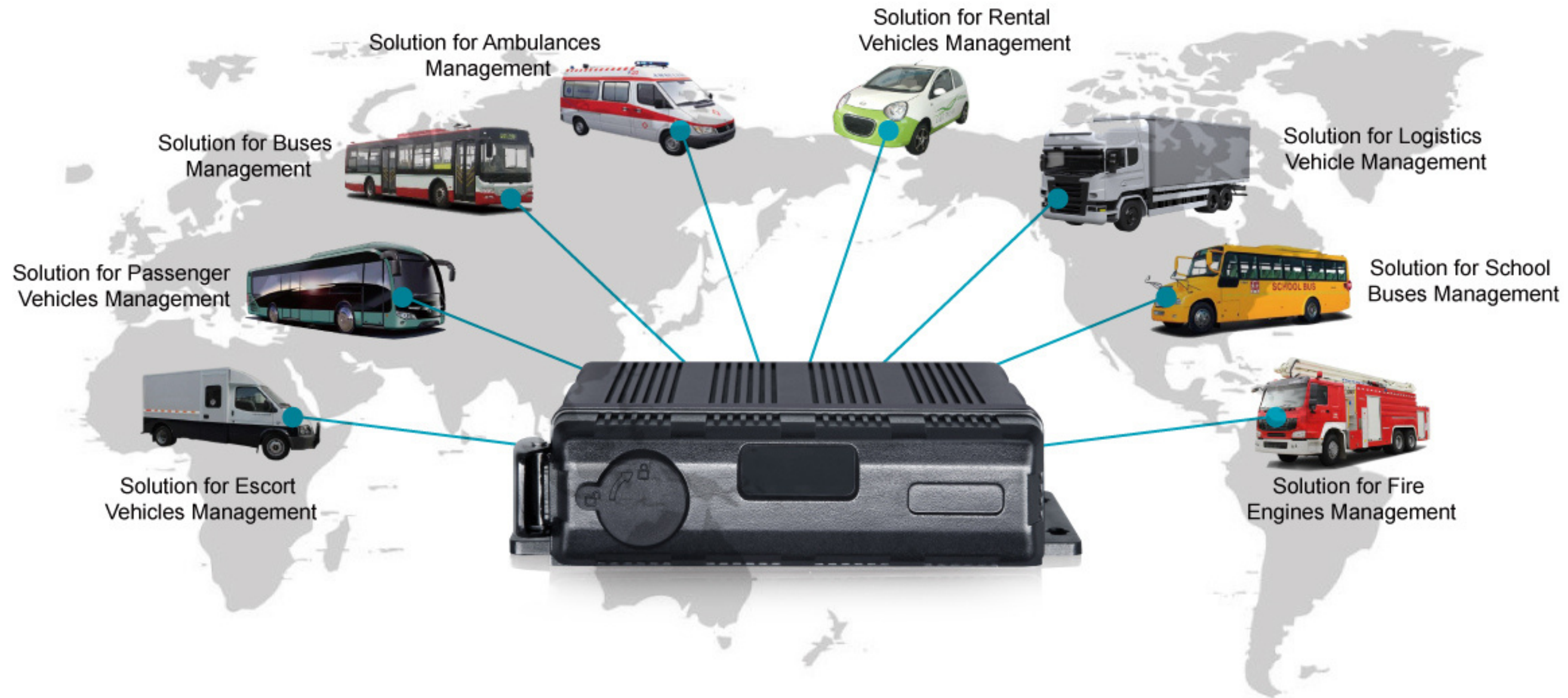


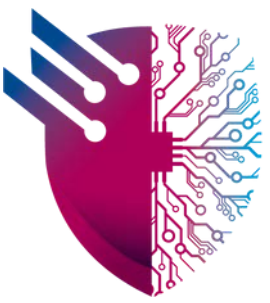


# MDVR SOLUTION

## Professional 4CH MDVR system for effective fleet management

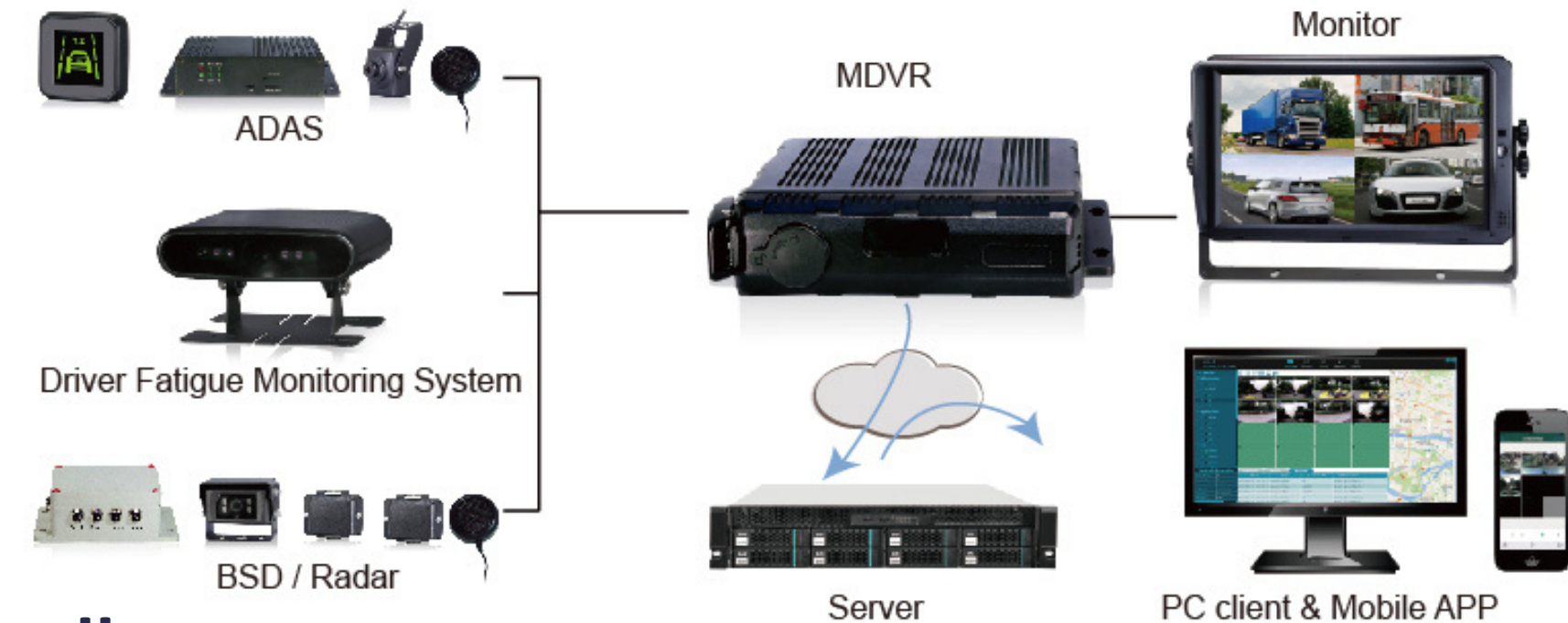
It's designed for various vehicles management, and widely used in buses, coaches, construction machinery, taxis, lorries, fire trucks, ambulances, passenger vehicles, etc.

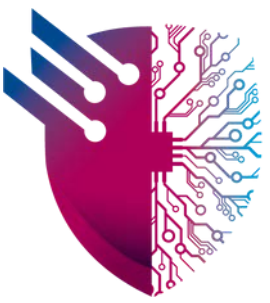




# Key Benefits

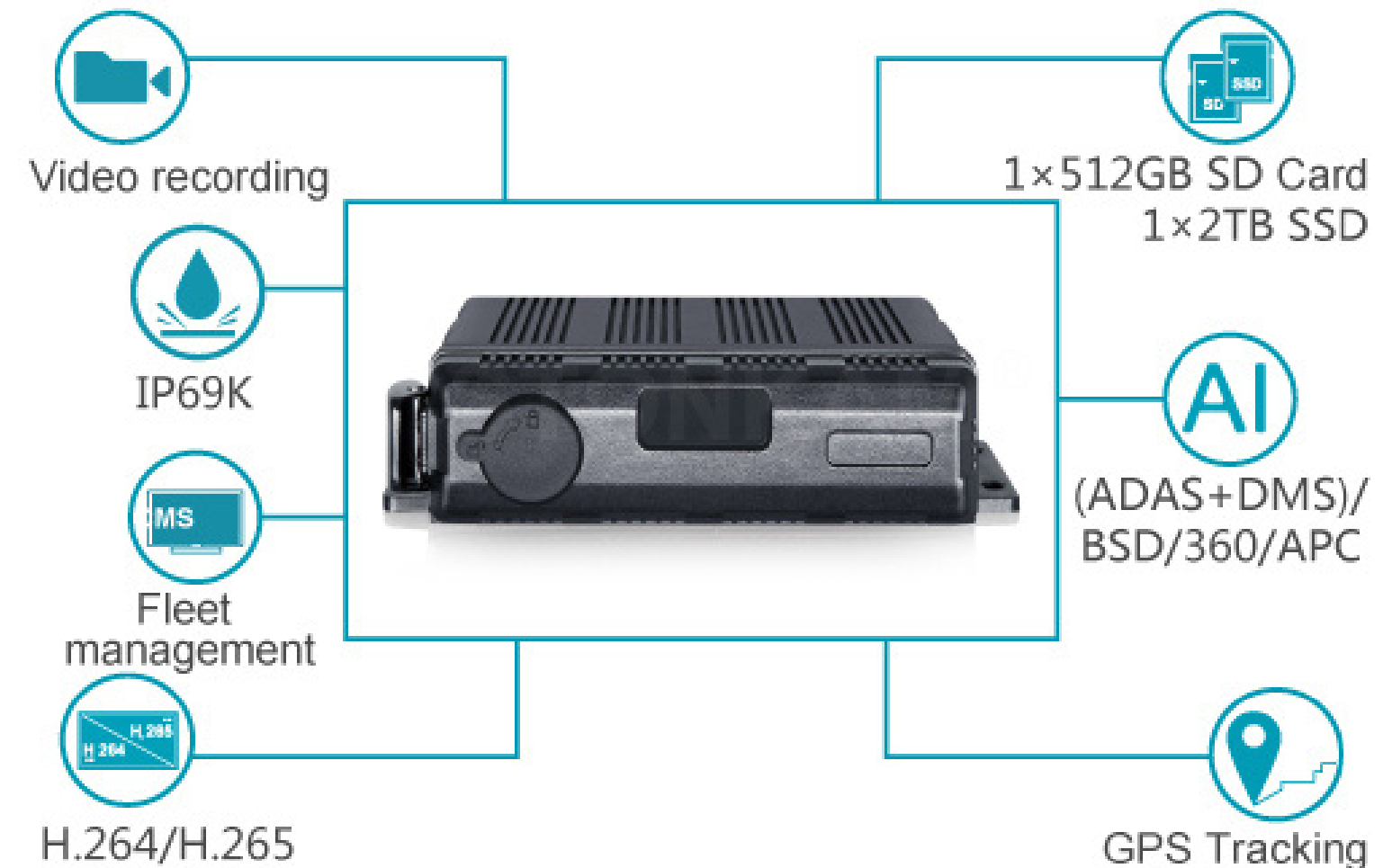
- It could sense and monitor all abnormal situations in real time, such as people, vehicles and road in driving process.
- it could offer real data of vehicle driving and driving behavior.
- Assists with employee and asset protection.
- Integrates with tracking units.
- Provides insight into critical events.
- Monitors & manages driver behaviour.
- Industry leading high-resolution video with user-friendly interface.
- Professionally installed & hardwired into vehicle.





# Key Features

- IP69K waterproof
- Multi-function access (Radar, OBD, voice intercom, speed, tire pressure, fuel consumption, temperature, door switch, vehicle weight, vibrator and other sensors available)
- Timely incident replay
- Auto-capture based on G-force events
- Connect multiple internal & external camera channels
- Alerts for tampering, incidents & triggered duress switch
- View recorded footage combined with map locations





Door switch



Microwave /  
ultrasonic radar



Temperature



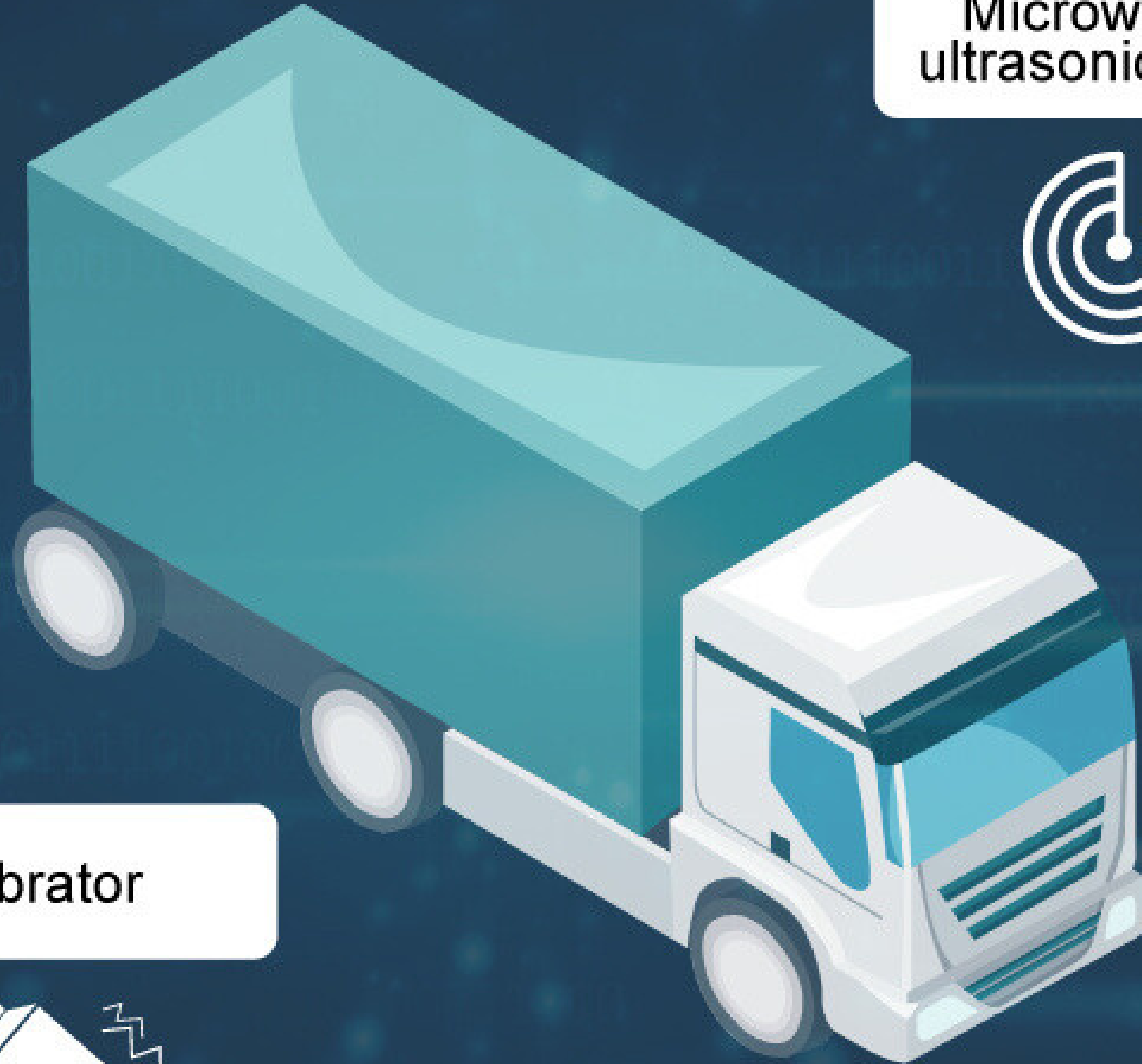
Voice intercom



Tire pressure



Vibrator

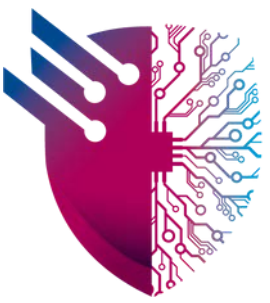




# SYSTEM SPECIFICATIONS (DVR)

- DVR:
- 4 Channels HD 1080P
- Support (TVI - AHD – CVI - CVBS)
- Channel 1 up to 3MP @ 12fps DVR 4Port
- Channels 1-2 up to 3MP @ 12fps DVR 8Port
- Channels 1-4 up to 3MP @ 12fps DVR 16Port
- HDMI, VGA Outputs (1920 x 1080)
- Support H.265+ Compression
- Access by Cloud P2P
- Synchronous Playback at 3MP Resolution
- + 1 DATA Support + Router 4G





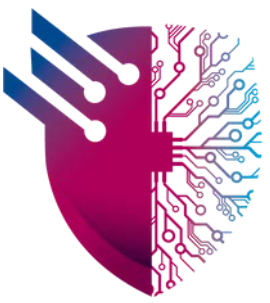
# SYSTEM SPECIFICATIONS (CAMERAS)

## Front View Camera

- 1080P high definition
- WDR:105dB(MAX)
- DC power:12V
- Working temperature: -20°C ~ +70°C
- Anti-vibration: ISO16750-3(MAX 5.9G)







# SYSTEM SPECIFICATIONS (CAMERAS)

## Forward Facing Dual Car Camera

- **1080P WDR Forward Facing Car Camera:**

1080P high definition

WDR:120dB(MAX)

Wide viewing angle: 170°/ 130°

IP69K

DC power:12V / 10 ~ 32V

Working temperature: -20°C ~ +70°C

Anti-vibration: ISO16750-3: 4.1.2.7: 2012

- **1080P Internal View Car Camera:**

1080P high definition

IP69K waterproof

Wide viewing angle: 150°/ 130°

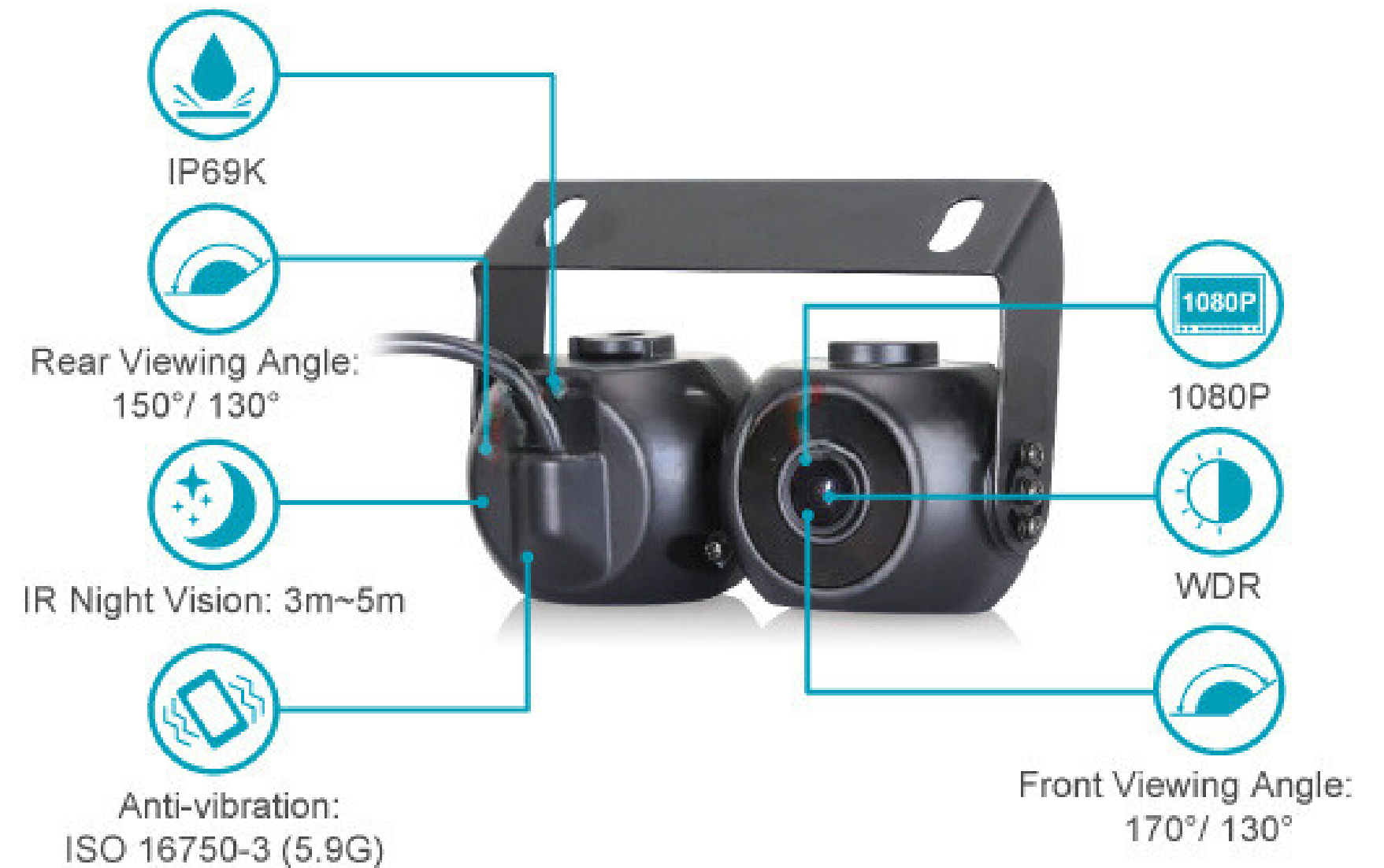
Night vision distance: 3m ~ 5m (9.84ft ~ 16.40ft)

Anti-vibration: ISO 16750-3 (Max. 5.9)

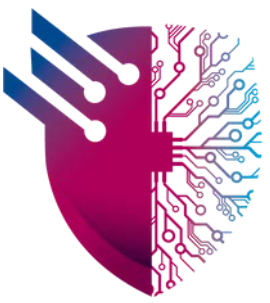
Mirror / normal image optional

DC power: 12V / 10 ~ 32V

Working temperature: -20°C ~ +70°C







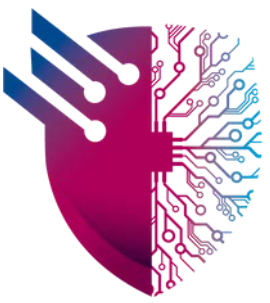
# SYSTEM SPECIFICATIONS (CAMERAS)

## Waterproof Bus Mini Dome Camera

- 1080P high definition
- IP69K waterproof
- Wide viewing angle: 150° / 130°
- Night vision distance: 3m~5m (9.84ft~16.40ft)
- DC power: 12V
- Anti-vibration: ISO 16750-3 (Max. 5.9G)
- Working temperature: -20°C ~ +70°C







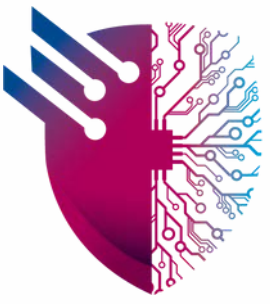
# SYSTEM SPECIFICATIONS (CAMERAS)

## Waterproof Outdoor DVR Dome Camera

- 1080P high definition
- IP69K waterproof
- Wide viewing angle: 150° / 130°
- Night vision distance: 5m (16.40ft)
- DC power: 12V
- Anti-vibration: ISO 16750-3 (Max. 5.9G)
- Working temperature: -20°C ~ +70°C







# APPLICATION

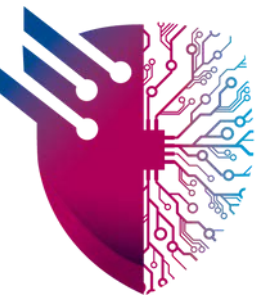
## MDVR integrated with Fatigue Monitor





# CASE SHOW

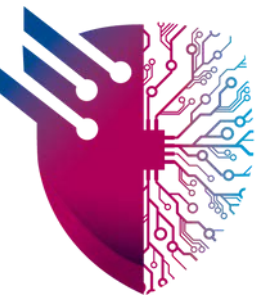
## Nestle Waters





# CASE SHOW

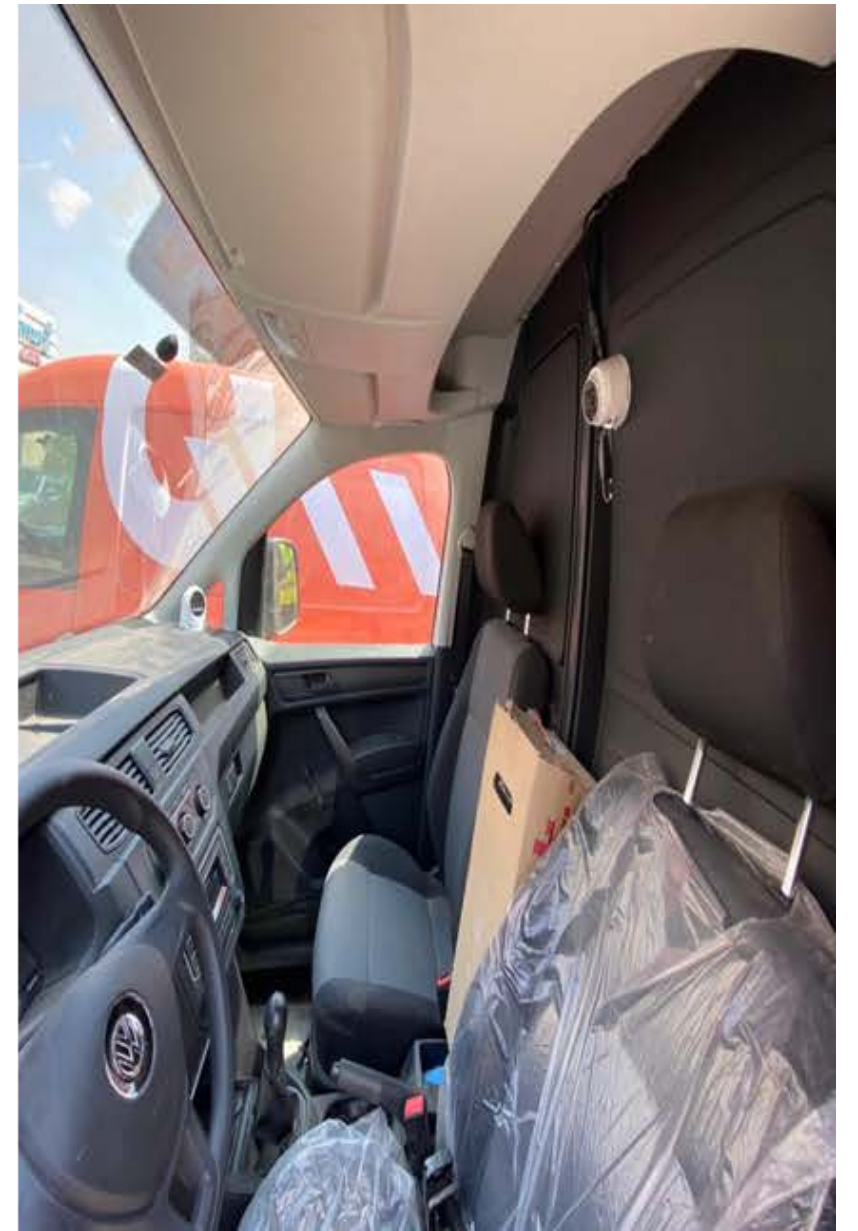
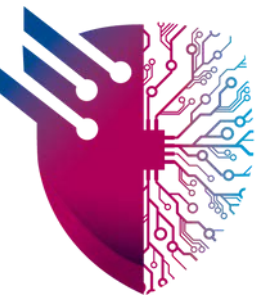
## Al- Watanya Poultry





# CASE SHOW

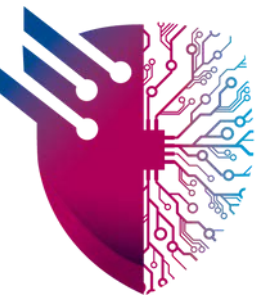
## Smart Car Van





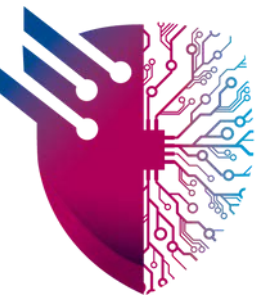
# CASE SHOW

## Chillout





# WE APPLIED MDVR TO THESE CUSTOMERS



**B.TECH**



**TSEBO**





# Get In Touch

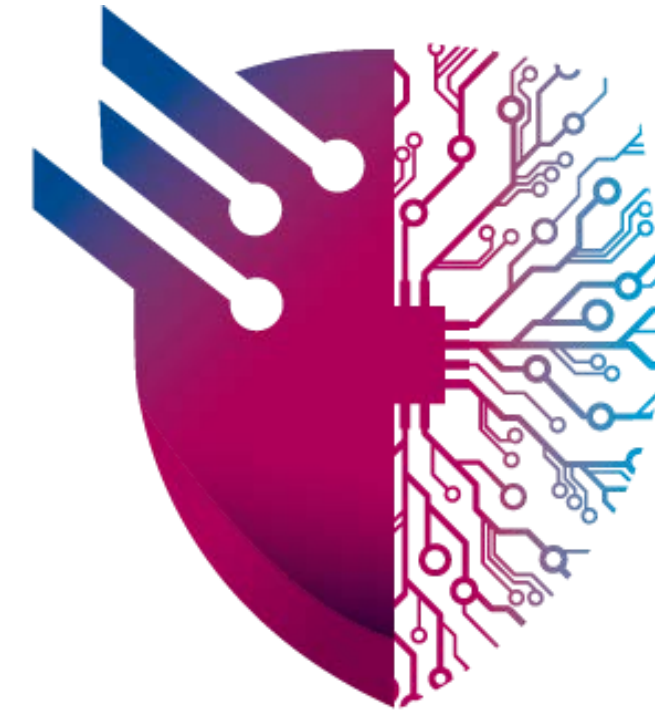
**We are here for you !**

 **+20 103 200 9855**

 **<https://elero-ect.com/>**

 **Info@elero-ect.com**

 **417 Omar Ibn El-Khattab St.  
District 2, 6th October, Giza, Egypt.**



**ELERO**  
Engineering Consulting & Training