

ELERO ECT

Proximity Warning Alert System

Data Management

Tag Vibration



Vehicle to Vehicle
Anti-Collision



Pedestrian
Warning Alert



Asset
Protection



Access
Control





CONTENT

- Introduction
- Why Forklifts Are So Dangerous?
- Proximity Warning Alert System
- How Does It Work?





INTRODUCTION

- Forklift anti-collision system is a safety distance measurement system independently developed based on UWB technology, the accuracy can reach the centimeter level, and the forklift accident can be effectively prevented through accurate distance measurement and pre-alert.
- In specific applications, when the distance between vehicles and vehicles between pedestrians is less than the set minimum value, the alarms and tags connected to the base station will send out alarms in real time to prevent collision accidents.



Alert Beep
+ vibration





WHY FORKLIFTS ARE DANGEROUS?

MOST COMMON ACCIDENTS WITH A FORKLIFT



Collision with a pedestrian



Struck by falling material



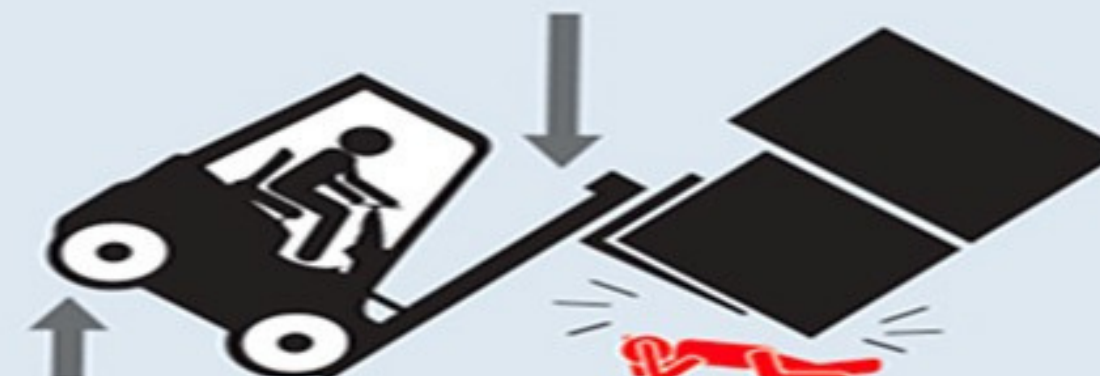
Crushed between forklift and a surface



Fall from platform on the forks



Accident with a victim on or in a moving forklift



Crushed by forklift tipping over due to heavy load

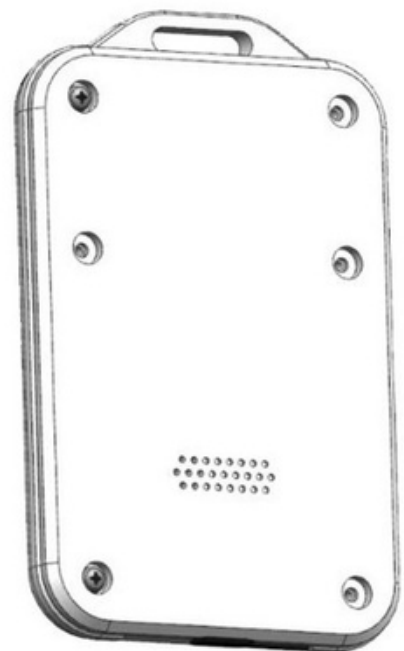


Proximity Warning ALERT SYSTEM

System Components



Base Station



Size: 97mm*61mm*8.5mm

Tag



Warning light



HOW DOES IT WORK?

Working condition 1: Leave the safety area and provide warning

When the base station sets a safety area of 0.5m (the safety area range can be set freely), humans or vehicles carrying tags in the safety area within 0.5m from the base station will not trigger the alarm.

When the tag leaves the safety area, the device will alarm, and when it returns to the safety area, the alarm will be automatically off.

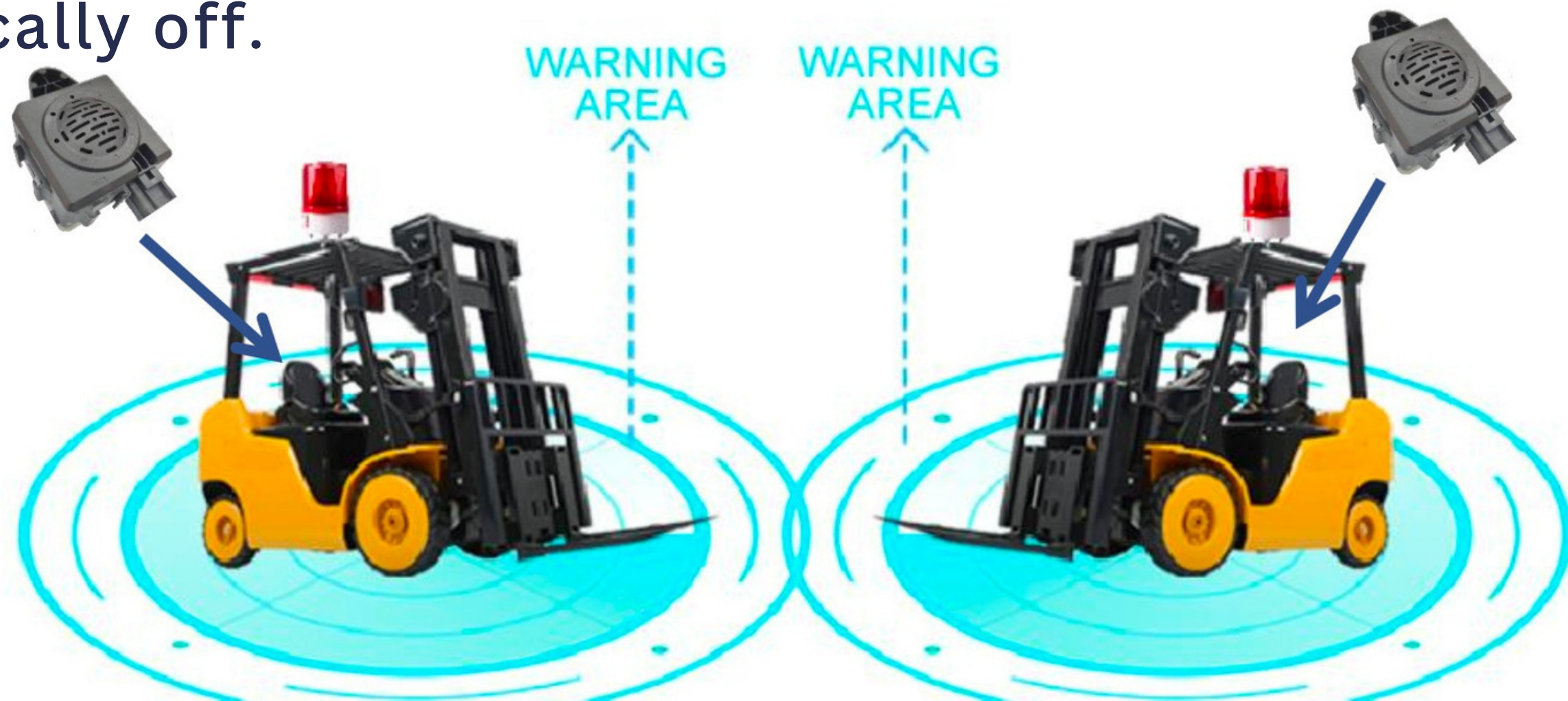




HOW DOES IT WORK?

Working condition 2: Collision warning between vehicles

- The two or more vehicles are installed base station. When the distance between vehicles is less than the set alarm distance, the base station will provide an audible and visual alarm.
- After leaving the alarm area or keeping a certain distance, the alarm will be automatically off.



Get In Touch

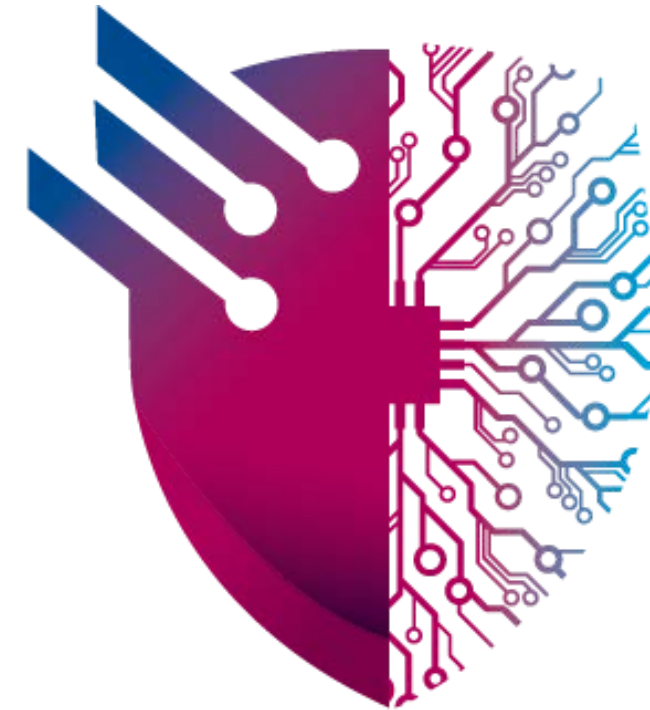
We are here for you !

 +20 103 200 9855 / +20 107 097 7935

 <https://elero-ect.com/>

 Info@elero-ect.com

 417 Omar Ibn El-Khattab St.
District 2, 6th October, Giza, Egypt.



ELERO
Engineering Consulting & Training