



ELERO ECT **REVERSING CAM AND SENSOR PARK**





FEATURES

Parking sensor ensures a safer driving experience with its specialized safety assistance device – eliminating any blind spots and blurred vision. This amazing tool notifies the driver of surrounding obstacles either through a built-in buzzer or digital color LED display, creating peace-of-mind for those on the road.

- Built-in buzzer
- Digital and color LED display
- Digital display from 0.3m-3.0m
- Delicate crescent-shaped display





SYSTEM SPECIFICATIONS



Rear Camera

Power Input: 12 V DC Viewing Angle: 92°/ 120°

Monitor

Power Input: 12/24V Screen: 7" digital LCD display.



Sensor

No. of Sensors: 4 /Power Input: 9/36V,DC/<5W

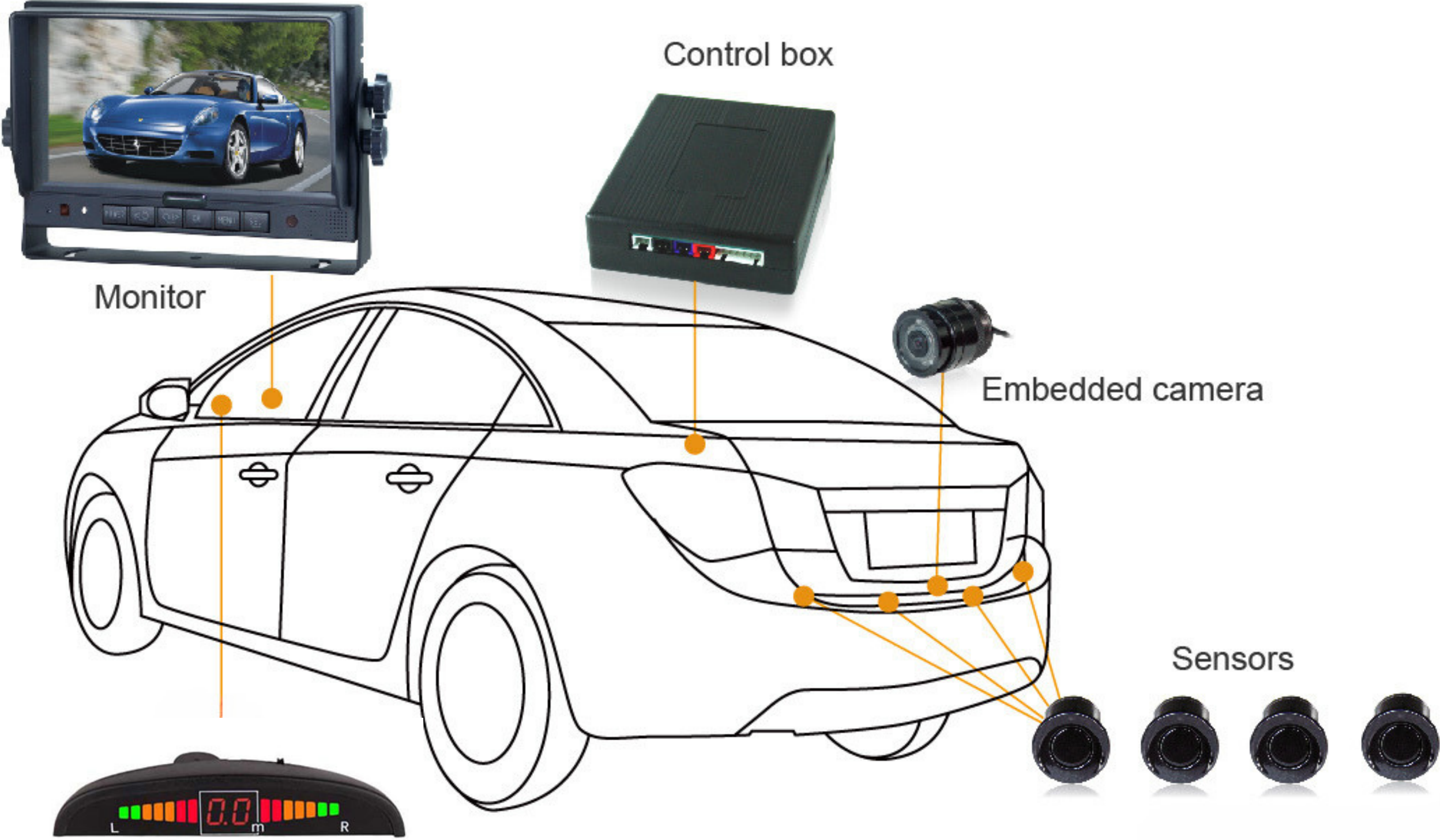
Detecting distance: 0.3 – 3m.



Color LED display for Sensors



SYSTEM ARCHITECTURE AND DESIGN





APPLICATION

This solution is designed for all types of vehicles.



Get In Touch

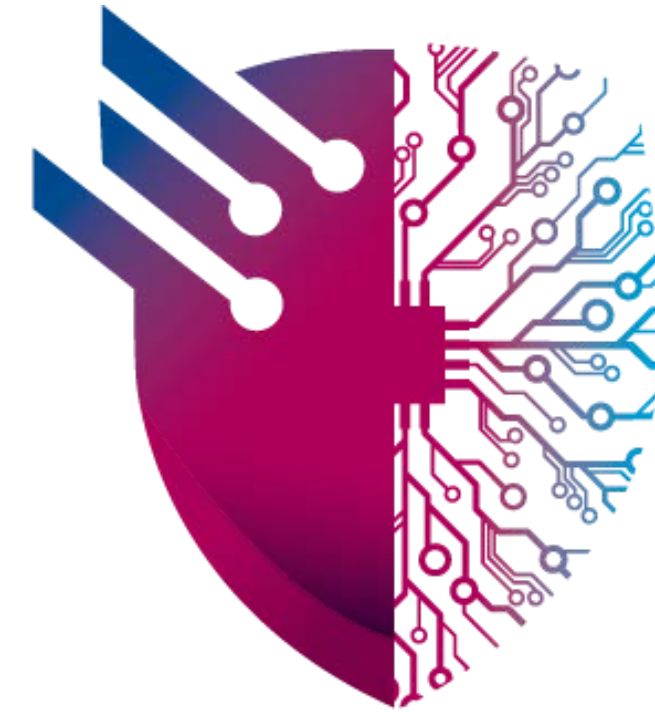
We are here for you !

 **+20 103 200 9855**

 **<https://elero-ect.com/>**

 **Info@elero-ect.com**

 **417 Omar Ibn El-Khattab St.
District 2, 6th October, Giza, Egypt.**



ELERO
Engineering Consulting & Training