



# **ELERO ECT FORKLIFT CABLING CAMERA SOLUTION**





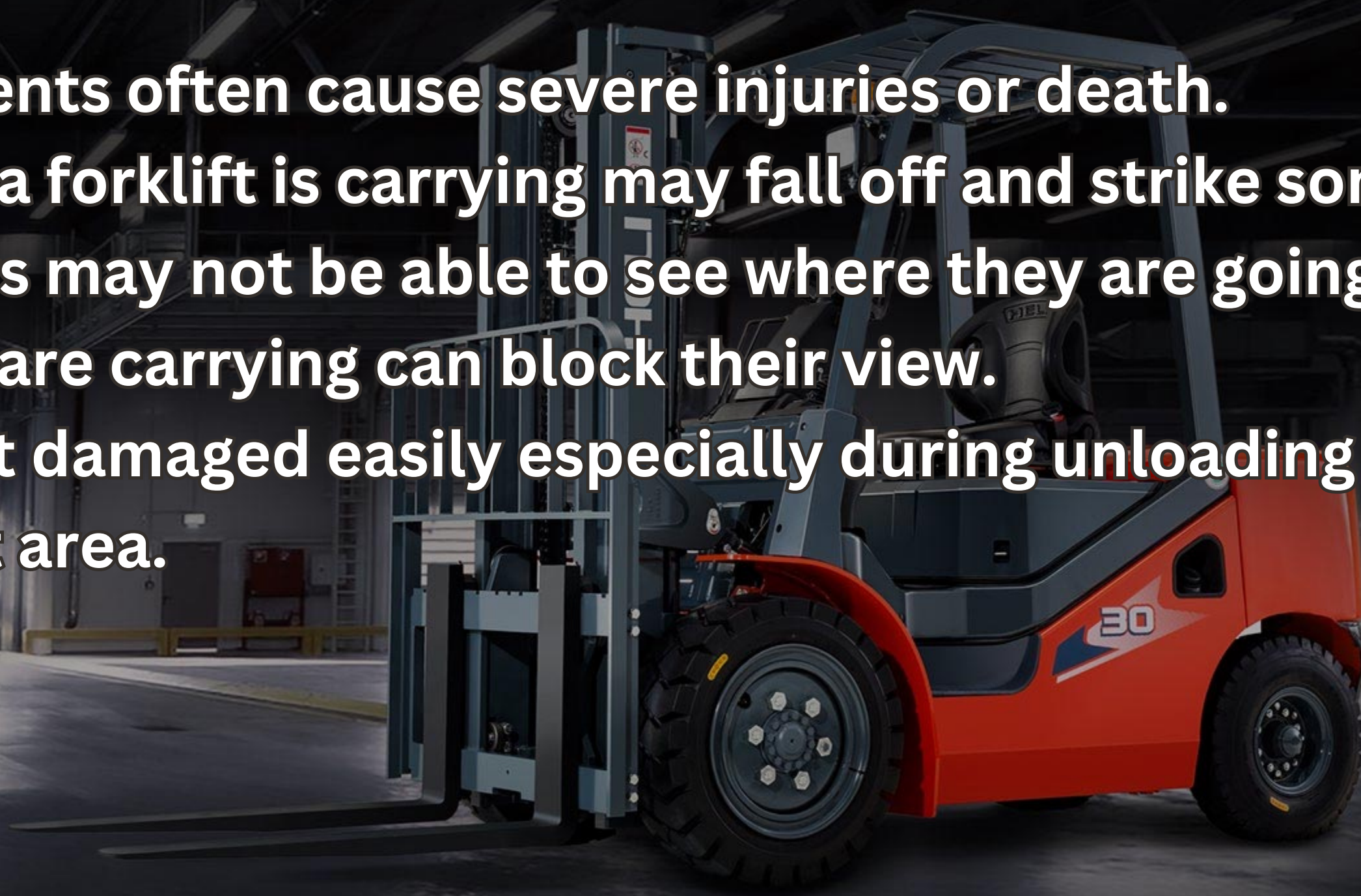
# CONTENT

- **Why Forklifts Are Dangerous?**
- **System Features**
- **System Specifications**
- **Application**
- **Case Show**



# **WHY FORKLIFTS ARE SO DANGEROUS?**

- **Forklift accidents often cause severe injuries or death.**
- **The load that a forklift is carrying may fall off and strike someone.**
- **Forklift drivers may not be able to see where they are going because the load they are carrying can block their view.**
- **Loads may get damaged easily especially during unloading due to the blind spot area.**







# SYSTEM FEATURES

- Elero provides camera solution for loading machines, to help in reversing and operating, the whole camera system includes backup camera, monitor.
- Driver can see the rearview and blind spots of the fork which helps in making the load more accurately to prevent goods from being damaged.





# **SYSTEM SPECIFICATIONS**

## **Full View Monitor With Metal Waterproof**

**7 inch IPS full view monitor is designed with a waterproof metal bracket and adjustable angle sun shield, flexible installation and easy to use. 4 camera video inputs, its wide viewing angles create no color differences for an enhanced light and shade level to give you sharp clarity in your visuals.**

- With speakers**
- Multi-languages available**
- Have remote control function**
- Images can be flipped up and down from left to right**
- With short circuit protection function of power supply**





# **SYSTEM SPECIFICATIONS**

## **Rear & Side View Camera**

**Round ultra slim LED flush mount IP68 side view backup camera. Get the peace of mind that comes from having full visibility all around your vehicle.**

- **Watts 480W, 550W, 960W, 1100W**
- **Lumen efficiency 145lm/W, 120lm/W**
- **IP68 ingress protection and 10KV surge protection**
- **5 years warranty**
- **Certificates: ENEC, SAA, CB, CE, RoHS**





# APPLICATION

- A Camera Solution designed specifically for all types of material handling equipment as Forklift, Reach Truck, Crane, Roll Clamp, etc.





# CASE SHOW

## Nestle Waters



# Get In Touch

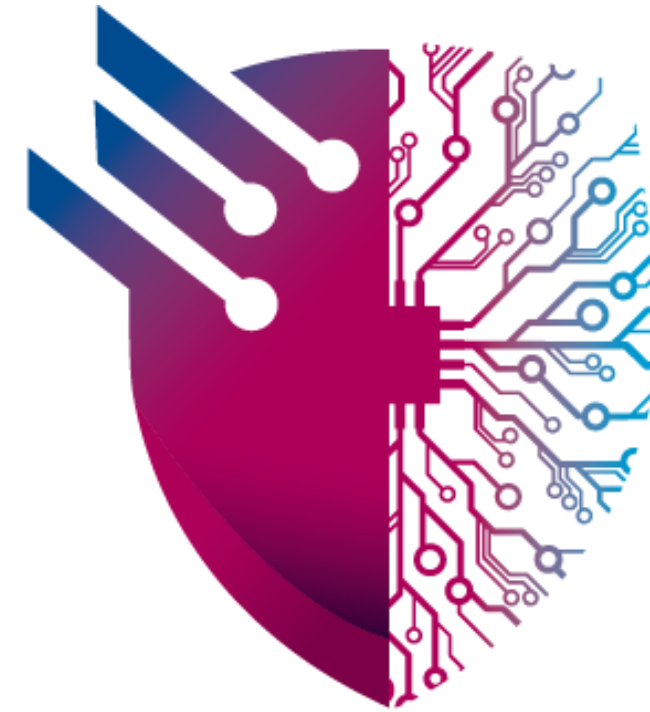
**We are here for you!**

 **+20 103 200 9855**

 **<https://elero-ect.com/>**

 **Info@elero-ect.com**

 **417 Omar Ibn El-Khattab St.  
District 2, 6th October, Giza, Egypt.**



**ELERO**  
Engineering Consulting & Training